

# Scrutiny & Overview Committee Safer Croydon Partnership

Councillor Hamida Ali  
5<sup>th</sup> March 2019

# Reducing Crime and Disorder: A Strategic Priority

Page 2

Crime and safety is a key priority within the current Corporate Plan

There are 6 corporate objectives under the theme “Everyone feels safe in their street, their neighbourhood, and their home”.

The Safer Croydon Partnership is a key element in the delivery of these objectives with our partners

# Safer Croydon Partnership

The purpose of Safer Croydon Partnership (SCP) is to act as a subgroup of Croydon Strategic Partnership leading on reducing crime and disorder.

Pages 3 The Safer Croydon Partnership acts as the statutory Community Safety Partnership for Croydon as stipulated by the Crime and Disorder Act 1998.

Statutory partners include the Council, CCG (Health), CRC, Probation, Fire and Police.

Voluntary partners include CVA, BME Forum, CAYSH

# SCP Statutory Requirements

- Have a strategy group that meets once a year with at least two statutory partners represented.
- Produce and monitor a partnership plan that has regard for MOPAC's policing plan priorities.
- Regularly engage and consult with the community about their priorities and progress achieving them.
- Set up protocols and systems for sharing information.
- Produce an annual strategic assessment.
- Commission domestic violence homicide reviews.

# Statutory Compliance

Requirement	RAG Rating
Annual Strategy group	<b>G</b> - SCP Exec meets every 2 months
Monitored Partnership Plan	<b>G</b> - Strategy in place with thematic actions plans and updates every SCP Exec meeting
Community Consultation and Engagement	<b>G</b> - Current SCP survey running in addition to You Choose campaign
Information Sharing	<b>A</b> – ICO enforcement notice against the MPS (London wide)
Annual strategic assessment	<b>G</b> – Conducted annually
Domestic Homicide Reviews	<b>G</b> – SCP chair agrees DHRs and reviews managed by DASV board

# SCP Priorities 2017-2020

Through the SCP Strategy and DASV Strategy (2018-2021) the partnership has the following priorities:

Page 6

To reduce the overall crime rate in the borough; focus on violent crime and domestic abuse.

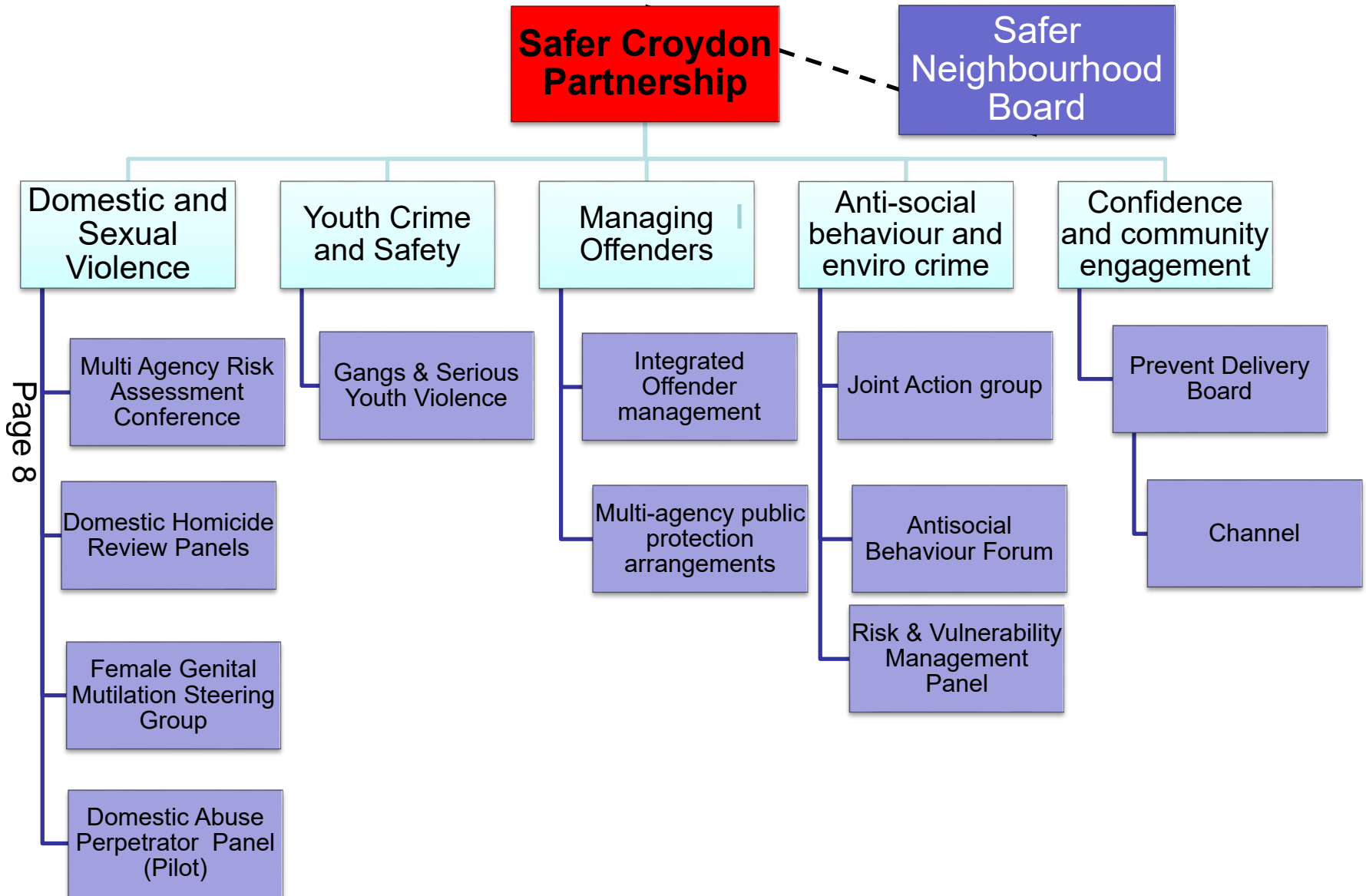
- To improve the safety of children and young people.
- To tackle anti-social behaviour and environmental crime.
- To improve public confidence and community engagement
- To improve support and reduce vulnerability for all victims of crime; focus on hate crime

# SCP Reviews 2017 & 2018

SCP structure was reviewed in 2017 to align structure to new strategy resulting by May 2018;

- A refreshed executive group and terms of reference
- New thematic programme boards to deliver plans
- Increased VCS representation throughout partnership
- New KPI dashboard and thematic annual 'call in' process

# Safer Croydon Structure





# Performance

## Key KPIs On Target

KPI	Target	Actual	Difference
Less than 34% of IOM Cohort Reoffend in 12 months	34%	21.50%	12.5 Percentage points
Reduce Serious Youth Violence by 5%	453	368	-85 / -18.8%

## Key KPIs Off Target

KPI	Target	Actual	Difference
Increase Hate Crime reporting by 5%	775	699	-76 / -9.8%

## KPI Issues

Public Confidence Data: MOPAC delays in publishing the Police Public Attitude Survey (PAS) and low sample sizes make accurate assessment of public confidence challenging

MARAC repeat referrals – significant increase in referrals to the service since July 2018 (World Cup), For example October to December, 150 referrals to Croydon’s MARAC were received. This is a 26% increase from the same period last year. 35% of the total were repeat referrals.

# Strengths

- Good performance against the majority of SYV KPIs which has seen a decline since the peak in 2016.
- Executive board has regular written updates on every theme to hold chairs accountable
- VCS representation across the partnership structure
- Successfully secured a number of London pilots including Whole Schools Approach and DRIVE pilot

# Weaknesses

- Consistent engagement by all statutory partners at programme and operational boards can be challenging as partner agencies increasingly operate at a regional level (Police, Probation and CRC)
- Not all partners contribute equally e.g. only the CCG and the Council contribute to DHR costs.
- Coordination of so many VCS partners can be challenging, especially when many regional and national funding sources bypass local CSPs
- Evaluation of activity due to current lack of analytical resources, legacy ICT systems and volume of activity.

# Opportunities

Opportunities through partnership engagement of the proposed VRU model to enable;

- Greater focus on prevention of violence
- Public health approach to violence reduction including serious youth violence and domestic abuse and sexual violence
- Vulnerable Adolescents Review
- Establishing a long term approach and continuity of interventions
- Greater analytical capacity
- Creation of the Croydon Local Intelligence Panel

# Threats

- Lack of sustainable funding e.g. LCPF allocation from MOPAC cut from £708,000 to £598,000
- Police structure is currently moving to a tri-borough model (Sutton, Bromley, Croydon)
- ICO enforcement against the MPS for the Gangs Matrix may hinder further information sharing with partners under new GDPR legislation
- Coordination required with the new LSCB structure to prevent duplication of effort around SYV

This page is intentionally left blank

# **CABINET MEMBER FOR SAFER CROYDON & COMMUNITIES: SCRUTINY**

**Councillor Hamida Ali**  
**5<sup>th</sup> March 2019**

# Safer Croydon & Communities - Overview

- Wide ranging portfolio
- Critical contribution to our Corporate Plan and quality of life for residents
  - Everyone feels safer in their street, neighbourhood and home
    - Community safety / Safer Croydon Partnership
    - Community Safety Strategy priorities and delivery
    - Family Justice Centre / Domestic Abuse and Sexual Violence (VAWG)
    - Development of a Violence Reduction Network
    - Prevent and Counter Extremism
    - Regulatory services
  - People live long, healthy, happy and independent lives
    - Voluntary and community sector relationship, strategy, funding and support
    - Community empowerment and devolution
    - Croydon Resilience
    - Financial inclusion
  - Our children and young people thrive and reach their full potential
    - LSP youth Plan
    - Community Safety Strategy
  - Equality and diversity





## Community Safety

Page 17

**30 partner agencies** delivering work to tackle SYV and knife crime, with reduction in level of crime;

- National Trading Standards pilot of online test purchases of knives
- Drive project: national pilot to disrupt domestic abuse and sexual violence
- Increase referrals from Children's Social Care to the FJC **by 45%**;
- Partnership with national **FGM** centre / multi-agency funded FGM specialist social worker
- More than **200 Prevent training** sessions have been carried out.



## Communities

- **VCS strategy** under development for March Cabinet;
- Successful bid for GLA's Good Growth Fund – **£2.4 million**;
- Stonewall and ENEI recognition for equality and diversity;
- Strong and well respected resilience team.

# WEAKNESSES

Page 19

## Across the portfolio

- Government funding reductions
  - Undermines Council and partner activities

## Community safety

- Where funding is provided:
  - **Short term** nature undermines sustainability
  - Promotes **competition rather than collaboration**
- Coordination of large number of **stakeholders** has been challenging.

## Communities

- Availability of affordable community space

# OPPORTUNITIES



- Working towards LGA ELFG accreditation (equality and diversity);
- Continued expansion of the Credit Union (financial inclusion);
- **CCTV investment** for smart city applications (community safety)
- **Best bar none** competition planned for 2019/20 (community safety)
- Second phase of **community empowerment and devolution** planned for 2019/20;
- VCS Networking (Communities).

# THREATS

- **Police Basic Command Unit changes** result in fewer senior resources, impacting local engagement;
- **Large volumes of activity**, with multiple funding streams that sit outside of the partnership's governance structure;
- ICO has announced a **second investigation** into partners that receive police information.



# Safer Croydon & Communities - Budget

- 2019/20 Budget assumptions
  - Resource growth to support Violence Reduction Network
  - Investment in CCTV ~ £2m
  - Maintenance of VCS funding
    - £1.9m Community fund
    - £100k Community grants
    - £560k Community Ward Budgets
  - Review of Rental Grant Subsidy and Discretionary Rate Relief
  - We will continue to bid for additional funding from Government

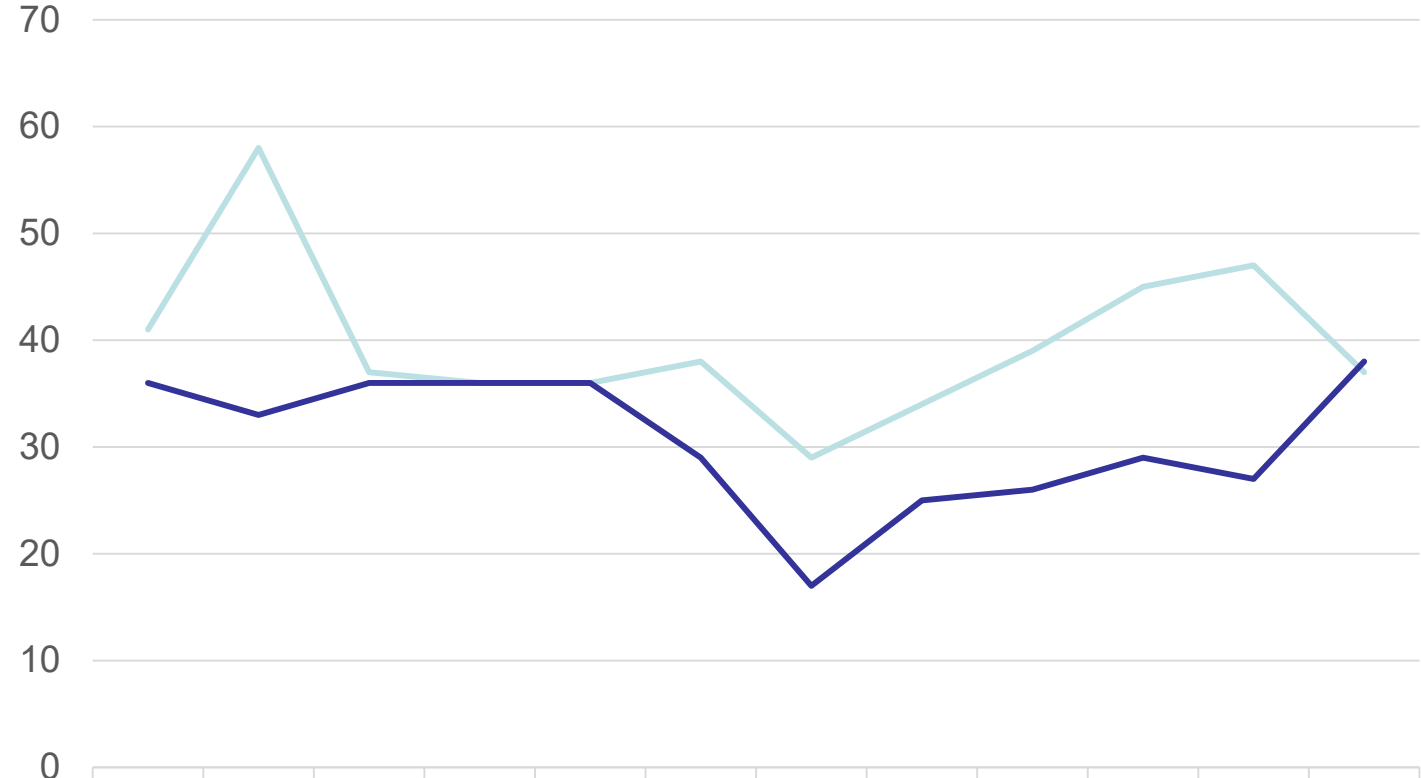
# London Borough of Croydon

## Developing a Public Health Approach to Violence Reduction for Croydon

**Councillor Hamida Ali**  
*Cabinet Member for Safer Croydon and Communities*

# Serious Youth Violence

	Croydon	London Average
Previous 12 months	477	258
Rolling 12 months	368	243
Difference	<b>-109</b>	<b>-15</b>
% Difference	<b>-22.9%</b>	<b>-5.8%</b>



Ranking (Out of 32 boroughs – 1<sup>st</sup> being the borough with highest number of offences)

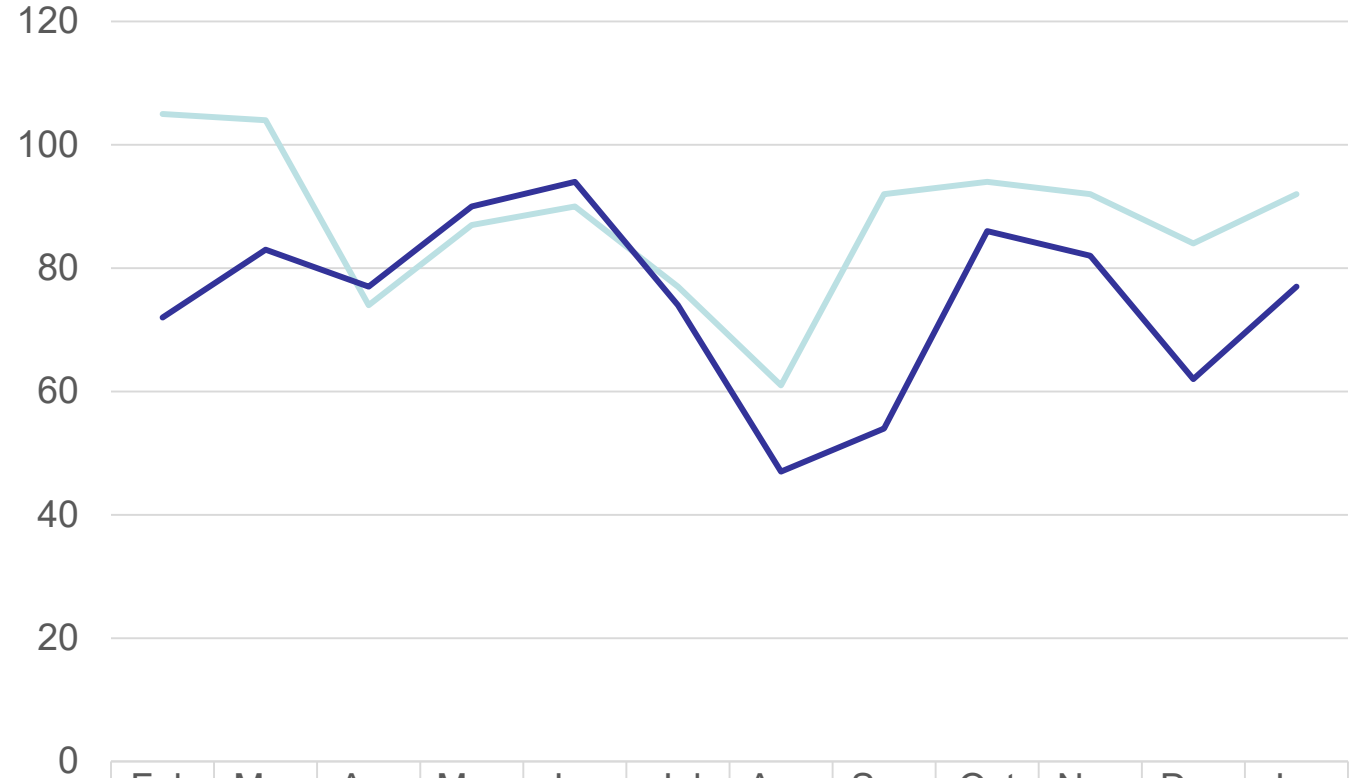
Previous 12 months = 1<sup>st</sup>  
 Rolling 12 months = 2<sup>nd</sup>

	Feb	Mar	Apr	May	Jun	Jul	Aug	Sep	Oct	Nov	Dec	Jan
— Previous 12 months	41	58	37	36	36	38	29	34	39	45	47	37
— Rolling 12 months	36	33	36	36	36	29	17	25	26	29	27	38



# Youth Violence

	Croydon	London Average
Previous 12 months	1,052	590
Rolling 12 months	898	555
Difference	<b>-154</b>	<b>-35</b>
% Difference	<b>-14.6%</b>	<b>-5.9%</b>



	Feb	Mar	Apr	May	Jun	Jul	Aug	Sep	Oct	Nov	Dec	Jan
— Previous 12 months	105	104	74	87	90	77	61	92	94	92	84	92
— Rolling 12 months	72	83	77	90	94	74	47	54	86	82	62	77

Ranking (Out of 32 boroughs – 1<sup>st</sup> being the borough with highest number of offences)

Previous 12 months = 1<sup>st</sup>

Rolling 12 months = 1<sup>st</sup>

# Knife Crime

	Croydon	London Average
Previous 12 months	637	460
Rolling 12 months	531	458
Difference	<b>-106</b>	<b>-2</b>
% Difference	<b>-16.6%</b>	<b>-0.4%</b>



	Feb	Mar	Apr	May	Jun	Jul	Aug	Sep	Oct	Nov	Dec	Jan
Previous 12 months	66	70	46	42	47	48	47	54	50	51	71	45
Rolling 12 months	57	51	46	54	45	54	41	27	39	33	38	46

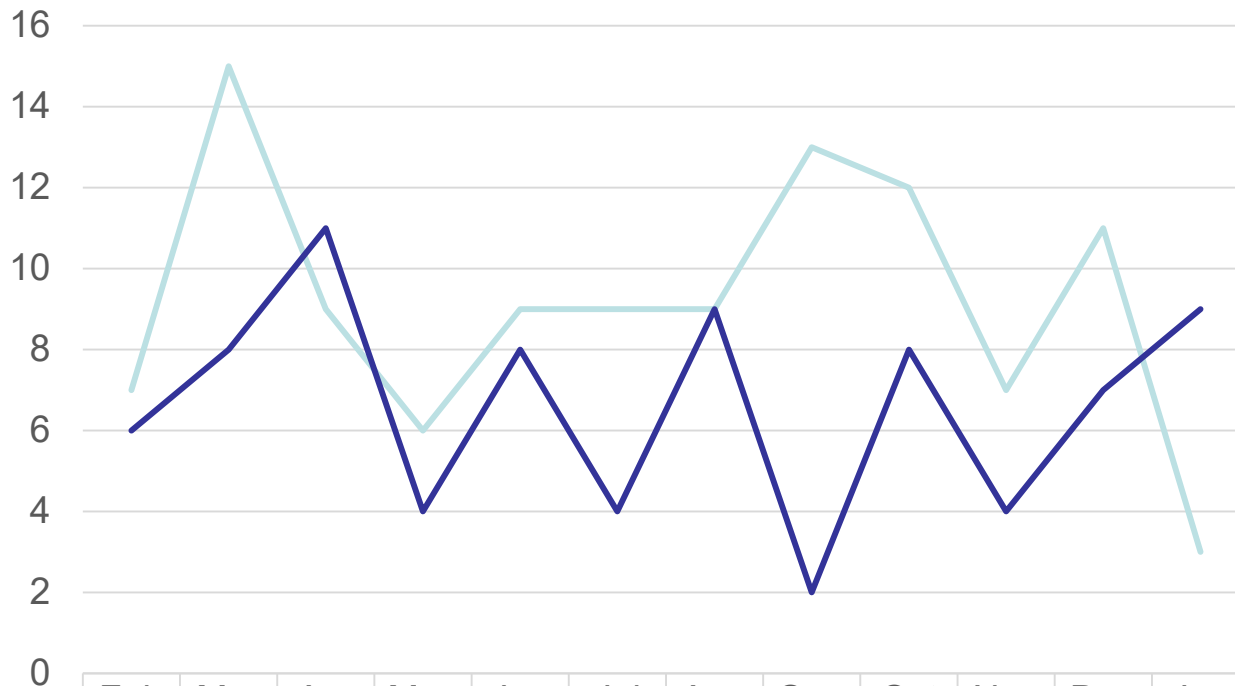
Ranking (Out of 32 boroughs – 1<sup>st</sup> being the borough with highest number of offences)

Previous 12 months = 7<sup>th</sup>

Rolling 12 months = 12<sup>th</sup>

# Knife Crime with Injury Victims aged 1-24 Not DA

	Croydon	London Average
Previous 12 months	110	66
Rolling 12 months	80	57
Difference	<b>-30</b>	<b>-9</b>
% Difference	<b>-27.3%</b>	<b>-13.6%</b>

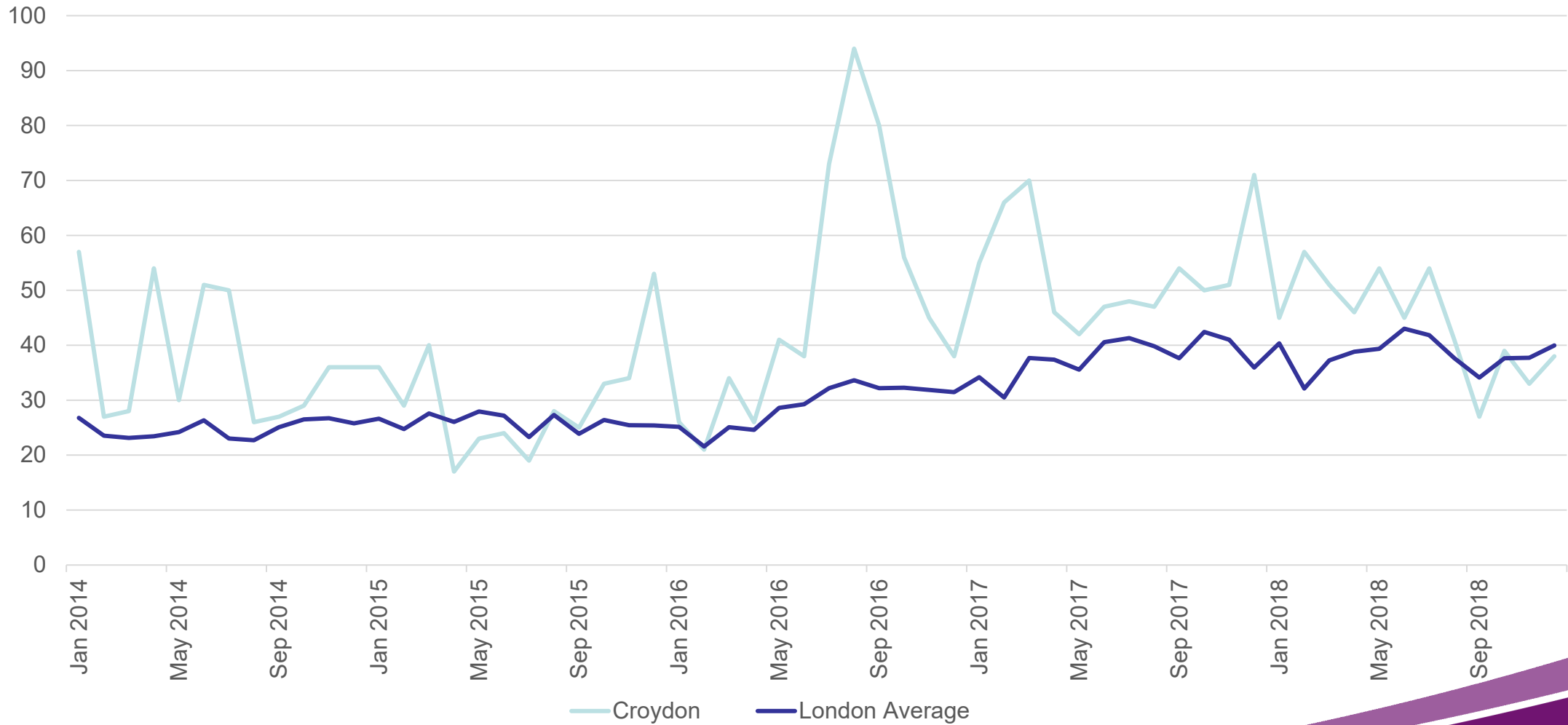


	Feb	Mar	Apr	May	Jun	Jul	Aug	Sep	Oct	Nov	Dec	Jan
Previous 12 months	7	15	9	6	9	9	9	13	12	7	11	3
Rolling 12 months	6	8	11	4	8	4	9	2	8	4	7	9

Ranking (Out of 32 boroughs – 1<sup>st</sup> being the borough with highest number of offences)

Previous 12 months = 5<sup>th</sup>  
Rolling 12 months = 7<sup>th</sup>

# Knife Crime in Croydon and London Average – 5 Year Trend (Jan 2014 to Dec 2018)



# What does this data tells us?

- We are seeing a greater reductions in Knife Crime, Youth Crime and Violence with Injury than the London average.
- Although we rank highest for youth violence by the number of offences, Croydon has the 15th highest rate in London with 9.1 offences per 1,000 young people.
- We are now lower than the London average for knife crime offences – the first time since 2015
- Offences are not consistently coming down year on year – Our ambition is for long term, sustained reductions.

# The key themes to our violence reduction approach

- A data driven approach and a common screening tool
- Preventing Violence Before it occurs
- Community based support
- Targeted Interventions
- Intensive support and Enforcement

Focusing on all forms of violence

# What our violence reduction approach includes



# The cross cutting priorities

- Every person understands the role they can play in reducing violence
- Taking every opportunity to intervene early
- Developing local community networks of support that help those impacted by violence navigate the challenges they face.
- Exclusion is no longer part of our vocabulary
- Recognition of the importance of culture and identity for families and young people.
- A collaborative approach - focus on creating leaders not structures

Being brave, being innovative



## Next Steps

- Draft Croydon Violence Reduction Approach Framework and Delivery Model – End February 2019
- Listening Events – February – April 2019
- Framework and Delivery Model to Safer Croydon Partnership Board – April 2019
- Informal Cabinet – May 2019
- Cabinet Approval – June 2019

This page is intentionally left blank